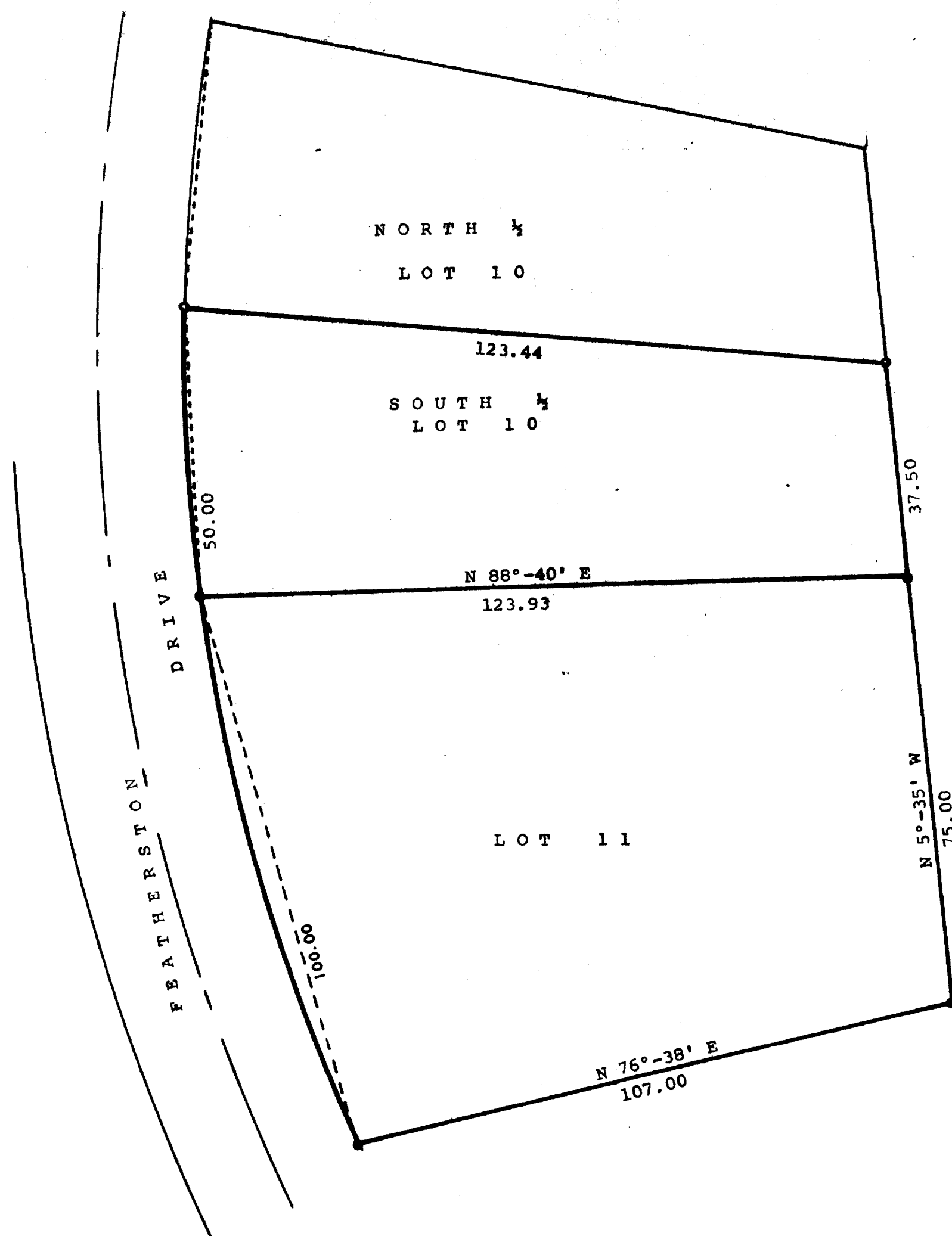


GEORGE T. DUNHAM
SURVEYOR & ENGINEER
DELAVER, WISCONSIN



Scale - 1" = 20'
● = Concrete Monument
○ = Iron Pipe

Plat of survey of Lot 11 and the south ½ of
Lot 10, Addition "A" to the Country Club Estates
located in the Village of Fontana, Walworth County,
Wisconsin.
April 23, 1973

George T. Dunham
George T. Dunham, Surveyor

